

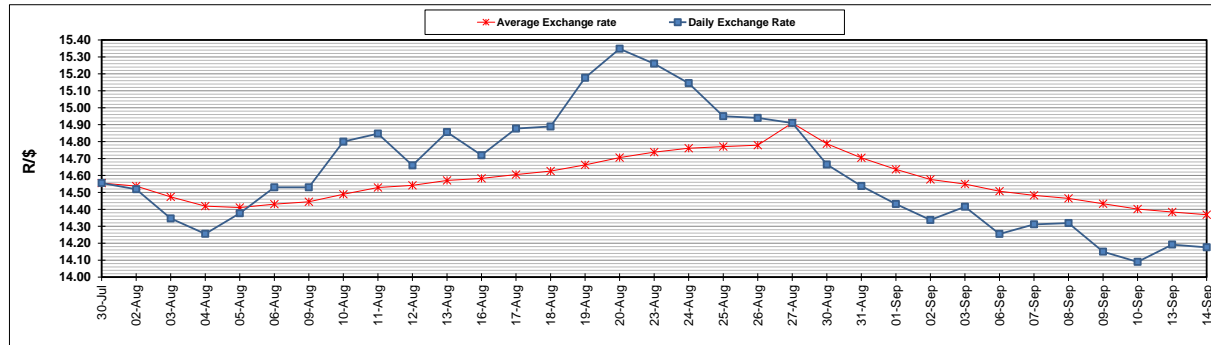
	PETROL 95 ULP	PETROL 93 ULP & LRP	DIESEL 0.05%	DIESEL 0.005%	ILL. PAR.
GAUTENG PUMP PRICE (SA c/l) AS FROM 01/09/2021	1,834.000	1,815.000	-	-	-
WHOLESALE PRICE (SA c/l) AS FROM 01/09/2021	-	-	1,548.980	1,552.380	948.488
SINGLE NATIONAL MAXIMUM RETAIL PRICE	-	-	-	-	1,197.000
BASIC FUEL PRICE - 14/09/2021 (SA c/l)	811.339	799.780	743.303	746.947	738.793
PRESS RELEASE CONTRIBUTION TO BFP 01/09/2021 - 14/09/2021 (SA c/l)	817.110	808.110	746.630	750.030	735.128
UNIT OVER/(UNDER) RECOVERY - 14/09/2021 (SA c/l)	5.771	8.330	3.327	3.083	(3.665)
AVERAGE BASIC FUEL PRICE 27/08/2021 - 14/09/2021	799.842	787.771	738.623	741.801	732.903
AVERAGE UNIT OVER/(UNDER) RECOVERY 27/08/2021 - 14/09/2021	19.687	22.757	13.545	13.536	5.687

ANALYSIS MOVEMENT OF AVERAGE OVER/(UNDER) RECOVERY

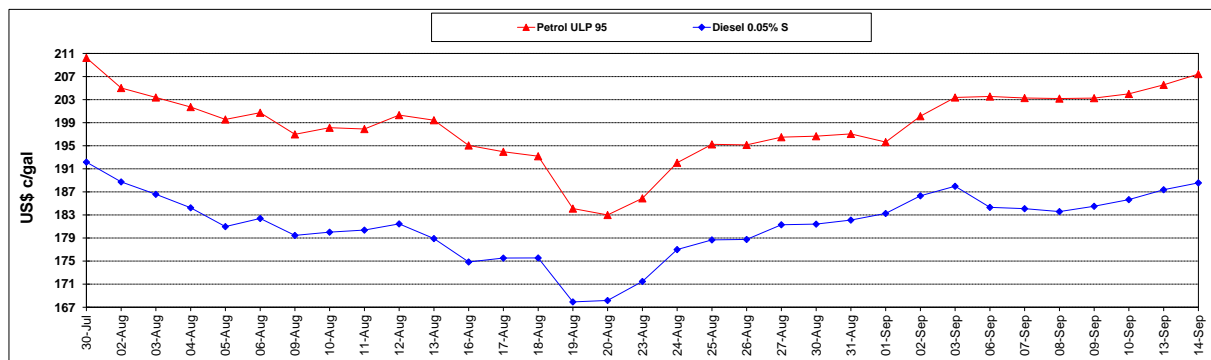
	PETROL 95	PETROL 93	DIESEL 0.05%	DIESEL 0.005%	ILL. PAR.
- MOVEMENT IN INTERNATIONAL PRODUCT PRICES	(3.171)	0.245	(7.562)	(7.661)	(15.257)
- MOVEMENT IN EXCHANGE RATE	22.857	22.512	21.107	21.198	20.944
AVERAGE UNIT OVER/(UNDER) RECOVERY 27/08/2021 - 14/09/2021	19.687	22.757	13.545	13.536	5.687

R/\$ EXCHANGE RATE - (R/\$14.1760 - 14/09/2021)

EXCHANGE RATE USED IN BASIC FUEL PRICE



INTERNATIONAL PRODUCT PRICES OF BASKET USED IN BASIC FUEL PRICE



BASIC FUEL PRICE IN SA CENTS PER LITRE

